

# MODULE PLUS OUTDOOR



[www.cosign.be/moduleplusoutdoor](http://www.cosign.be/moduleplusoutdoor)

## STYLISH MODULAR OUTDOOR SIGNS

With Module Plus Outdoor, Cosign has developed a modular system for outdoor signs that is often prescribed by architects and designers worldwide and that sign makers like to use because of its versatility and convenience and the option of making unique custom-made signs.

Module Plus Outdoor offers the perfect solution everywhere where a building or location needs to be indicated, a message must be presented or people must be shown the correct place regardless of whether this is for an industrial estate, a company or office building, a hospital, a school, a shopping center or a car park. Appropriate outdoor signs will also contribute towards strengthening a company's corporate identity.

The Module Plus Outdoor system consists of a series of round, square, triangular, octagonal and ellipse-shaped aluminium poles and text panels (box profiles) with a height of 46 mm, 60 mm, 100 mm, 120 mm, 150 mm, 200 mm and 250 mm. The text panels can be fixed by using special panel clamps. Other innovative accessories ensure that panels can be integrated which are made of different materials in any required size.

Recent innovations with regards to the poles, top caps and panel clamps will give the Module Plus Outdoor a very modern look. Cosign has added a 60mm and 80mm square pole and a 60mm and 90mm triangular one. The new injection molded aluminium top caps will be available in grey and black. The existing panel clamps have been modified to increase installation efficiency. All new items are compatible with the existing system and provide new innovative possibilities.



## SIGNALISATION EXTÉRIEURE MODULAIRE PARTICULIÈREMENT RAFFINÉE

Avec le Module Plus Outdoor, Cosign a lancé un système modulaire de signalisation extérieure fréquemment prescrit par les architectes et designers du monde entier et souvent utilisé par les fabricants d'enseignes du fait de sa grande polyvalence, de sa facilité d'utilisation, et de la possibilité de réaliser des enseignes uniques entièrement sur mesure.

Le Module Plus Outdoor constitue la solution idéale chaque fois qu'il est nécessaire d'indiquer un bâtiment ou un lieu, d'afficher un message ou d'orienter les visiteurs vers un endroit particulier, que ce soit dans un zoning industriel, un bâtiment d'entreprise, un immeuble de bureaux, un hôpital, une école, un center commercial ou un parking. Une signalisation extérieure de qualité contribue également au renforcement de l'image de marque de l'entreprise.

Le système Module Plus Outdoor se compose d'une série de poteaux en aluminium de section ronde, carrée ou elliptique, ainsi que de panneaux à texte en aluminium (profilés du type caisson) d'une hauteur de 46, 60, 100, 120, 150, 200 ou 250 mm. Les panneaux à texte sont fixés à l'aide d'attaches spéciales. D'autres accessoires innovants permettent d'intégrer des panneaux de toute taille, fabriqués en différents types de matériaux.

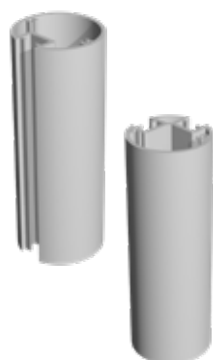
Des innovations récentes en ce qui concerne les poteaux, les capuchons et les crampons donneront le Module Plus Outdoor un look très moderne. Cosign a ajouté un poteau carré de 60 mm et de 80 mm et un poteau triangulaire de 60 mm et de 90 mm. Les nouveaux capuchons seront produits par moulage sous pression en aluminium gris et noir. Les crampons existants ont été modifiés afin d'augmenter l'efficacité des l'installation. Tous les nouveaux éléments peuvent être utilisés avec le système actuel et offrent de nouvelles possibilités innovantes.



# PROFILES / PROFILÉS

## ALUMINIUM POLES / POTEAUX ALUMINIUM

### ROUND POLES / POTEAUX RONDS



product code	description	
A00 1 60R1T	60mm round, 1-slot	6m/l
A00 1 60R2T	60mm round, 2-slots 60°	5m/l

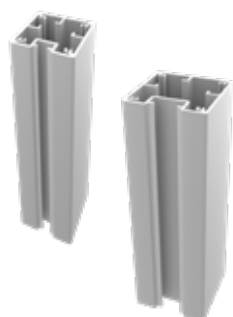
1. mill finish brut 2. silver anodised anodisé naturel



product code	description	
A00 1 90R1T	90mm round, 1-slot	6m/l
A00 1 90R2T	90mm round, 2 slots 180°	5m/l

1. mill finish brut 2. silver anodised anodisé naturel

### NEW SQUARE POLES / POTEAUX CARRÉS



product code	description	
A00 1 60S1T	60mm square, 1-slot	6m/l
A00 1 80S1T	80mm square, 1-slot	6m/l

1. mill finish brut 2. silver anodised anodisé naturel

## TOPCAPS OF POLES / CAPUCHONS

### ROUND TOPCAPS / CAPUCHONS RONDS



product code	description	
AOTR601 1	60mm round, laser cut 2mm	60mm rond, coupé par laser 2mm

1. mill finish brut 2. silver anodised anodisé naturel



product code	description	
AOT600 1	60mm round, pp	60mm rond, pp

1. white/ blanc 2. grey/ gris 3. black/ noir



product code	description	
AOTR600 2	60mm round, die cast	60mm rond, moulé sous pression

2. grey powder coated laqué en gris 3. black powder coated laqué en noir



product code	description	
AOTR901 1	90mm round, laser cut 2mm	90mm rond, coupé par laser 2mm

1. mill finish brut 2. silver anodised anodisé naturel



product code	description	
AOTR900 2	90mm round, die cast	90mm rond, moulé sous pression

2. grey powder coated laqué en gris 3. black powder coated laqué en noir

### SQUARE TOPCAPS / CAPUCHONS CARRÉS



product code	description	
AOTS601 1	60mm square, laser cut 2mm	60mm carré, coupé par laser 2mm

1. mill finish brut 2. silver anodised anodisé naturel



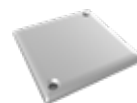
product code	description	
AOTS600 2	60mm square, die cast	60mm carré, moulé sous pression

2. grey powder coated laqué en gris 3. black powder coated laqué en noir



product code	description	
AOTS801 1	80mm square, laser cut 2mm	80mm carré, coupé par laser 2mm

1. mill finish brut 2. silver anodised anodisé naturel



product code	description	
AOTS800 2	80mm square, die cast	80mm carré, moulé sous pression

2. grey powder coated laqué en gris 3. black powder coated laqué en noir

## ALUMINIUM POLES / POTEAUX ALUMINIUM

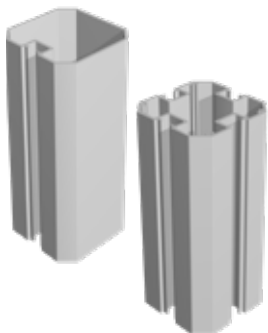
NEW

### TRIANGULAR POLES POTEAUX TRIANGULAIRES



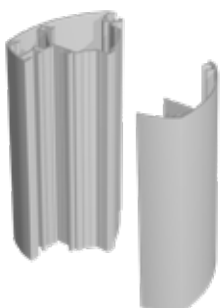
product code	description	
A00_1_60T1T	60mm triangular, 1-slot	6m/l
A00_1_90T1T	90mm triangular, 1-slot	6m/l
	1. mill finish brut	2. silver anodised anodisé naturel

### OCTAGONAL POLES POTEAUX OCTOGONAUX



product code	description	
A00_1_8081T	80mm octagonal, 1-slot	5m/l
A00_1_8084T	80mm octagonal, 4-slots	5m/l
	1. mill finish brut	2. silver anodised anodisé naturel

### ELLIPTICAL POLE POTEAU ELLIPTIQUE



product code	description	
ELP_1_000	elliptical base profile	5m/l
ELP_1_001	elliptical hinge profile	5m/l
	1. mill finish brut	2. silver anodised anodisé naturel

## TOPCAPS OF POLES / CAPUCHONS

### TRIANGULAR TOPCAPS CAPUCHONS TRIANGULAIRES



NEW

product code	description
AOTT601_1	60mm triangular, laser cut 2mm 60mm triangulaire, coupé par laser 2mm
	1. mill finish brut
	2. silver anodised anodisé naturel



NEW

product code	description
AOTT600_2	60mm triangular, die cast 60mm triangulaire, moulé sous pression
	2. grey powder coated laqué en gris
	3. black powder coated laqué en noir



NEW

product code	description
AOTT901_1	90mm triangular, laser cut 2mm 90mm triangulaire, coupé par laser 2mm
	1. mill finish brut
	2. silver anodised anodisé naturel



NEW

product code	description
AOTT900_2	90mm triangular, die cast 90mm triangulaire, moulé sous pression
	2. grey powder coated laqué en gris
	3. black powder coated laqué en noir

### OCTAGONAL TOPCAPS CAPUCHONS OCTOGONAUX



product code	description
AOT808_1	80mm octagonal, pp 80mm octogonaux, pp
	1. white/ blanc
	2. grey/ gris
	3. black/ noir



product code	description
AOT8084	80mm octagonal, 4 slots, pe 80mm octogonaux, 4 slots, pe
	black acrylic / acrylic noir

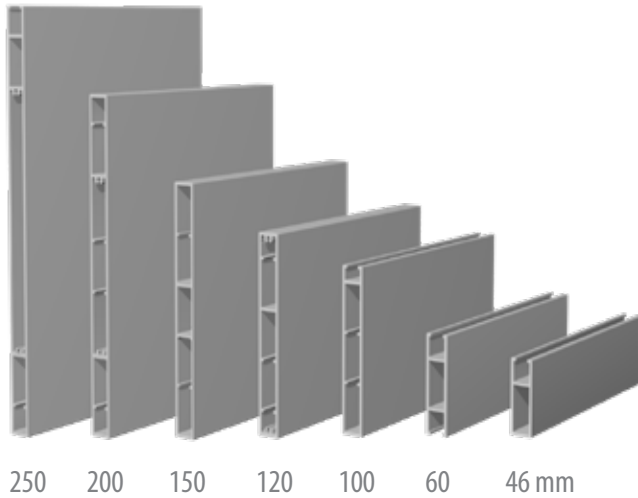
### ELLIPTICAL TOPCAPS CAPUCHONS ELLIPTIQUES



product code	description
AOTE101_1	elliptical topcap, laser cut 2mm capuchon elliptique, coupé par laser 2mm
	1. mill finish brut
	2. silver anodised anodisé naturel

## ACCESSORIES / ACCESSOIRES

### DOUBLE SIDED TEXTPANELS / CAISSONS DOUBLE FACE

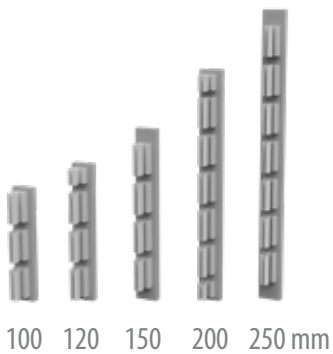


product code	description	
A00 1 250	250mm	5m/l
A00 1 200	200mm	5m/l
A00 1 150	150mm	5m/l
A00 1 120	120mm	5m/l
A00 1 100	100mm	5m/l
A00 1 060	60mm	5m/l
A00 1 046	46mm	5m/l

1. mill finish brut  
2. silver anodised anodisé naturel

\* Note : text panel open on top side : 250, 100, 46 mm  
text panel open on both sides : 60 mm

### ALUMINIUM ENDCAPS PROFILÉS ALUMINIUM OBTURATEUR POUR CAISSONS



product code	description
AOC 1 250	250mm
AOC 1 200	200mm
AOC 1 150	150mm
AOC 1 120	120mm
AOC 1 100	100mm

1. mill finish brut  
2. silver anodised anodisé naturel

### PANEL CLAMP CRAMPON DE FIXATION

	product code	description
	<b>NEW</b> AACL002	with inox screw / avec vis inox
	TOOL001	drilling guide for AACL002 / gabarit de perçage pour AACL002
	<b>UPDATE</b> FIXBOX001	without screw / sans vis



# ACCESSORIES / ACCESSOIRES

## STEEL FEET / PIEDS EN ACIER

product code	description
FEE1600	60mm round pole / poteau rond
DECOFEE2600	decorative foot / pied décoratif 60mm round pole / poteau rond
FEE19001T FEE19002T	90mm round pole / poteau rond 90mm round pole / poteau rond, 2-slots
FEE18081T FEE18084T	80mm pole / poteau octagonal 80mm pole / poteau octagonal, 4-slots
<b>NEW</b> FEE160ST FEE180ST	60mm square & triangular pole 60mm poteau carré et triangulaire 80mm square pole, 90mm triangular pole & elliptical pole 80mm poteau carré, 90mm poteau triangulaire & poteau elliptique

## FINISHING PROFILES / PROFILÉS DE FINITION

product code	description	5m/l
AOCO_1_00	finishing profile / profilé de finition 1. mill finish brut 2. silver anodised anodisé naturel	5m/l
ADAPTER_1_0	adapter profile / profilé de connection 1. mill finish brut 2. silver anodised anodisé naturel	5m/l
AORO_1_00	reduction profile / profilé de reduction 4mm plate material to be used instead of 8mm 1. mill finish brut 2. silver anodised anodisé naturel	5m/l
AOC_1_000	finishing profile of elliptical pole / profilé de finition 1. mill finish brut 2. silver anodised anodisé naturel	5m/l

## ROUND CORNER CONNECTOR / ANGLE ARRONDI

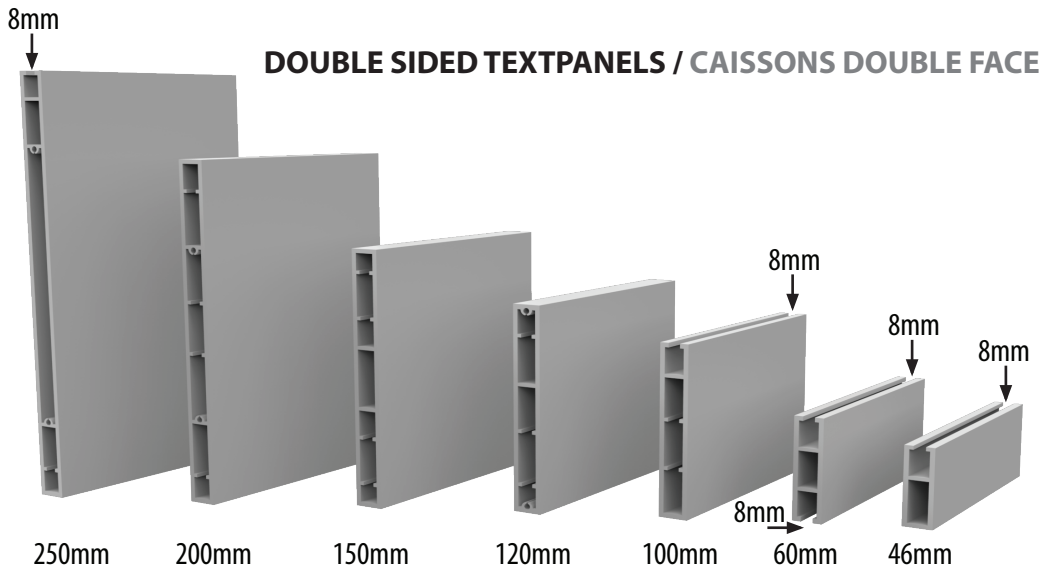
product code	description
CORN_1_090	mill finish, for round pole 90mm brut, pour poteau rond 90mm

## SCREW CAP / BOUCHON À VIS

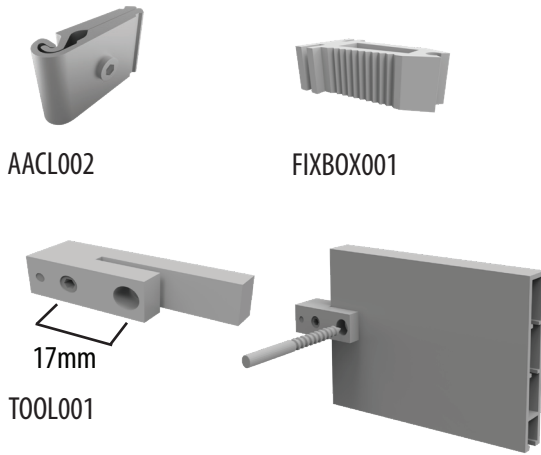
product code	description
NOP002	screw cap / bouchon à vis 1. white/blanc 2. grey/ gris



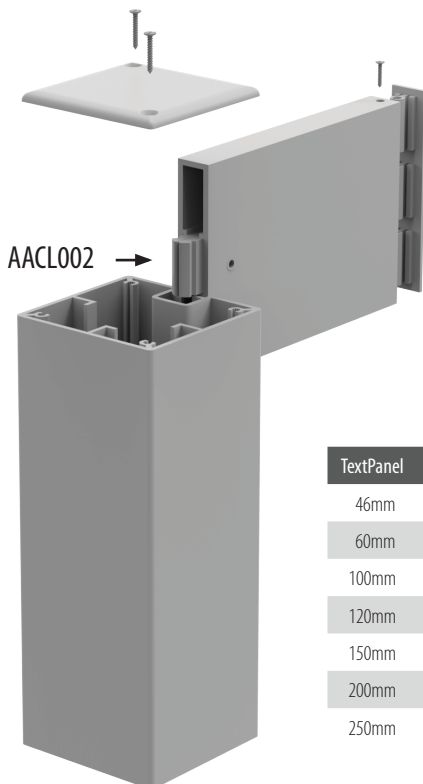
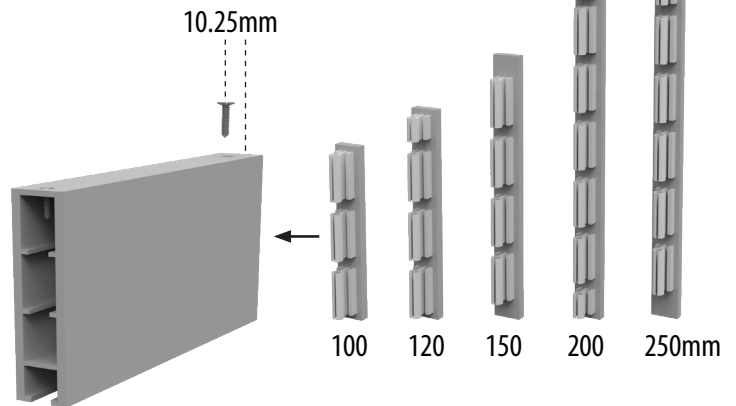
# INSTALLATION GUIDE / GUIDE D'INSTALLATION



## PANEL CLAMP / CRAMPON DE FIXATION



## ALUMINIUM ENDCAPS PROFILÉS ALUMINIUM OBTURATEUR POUR CAISSONS

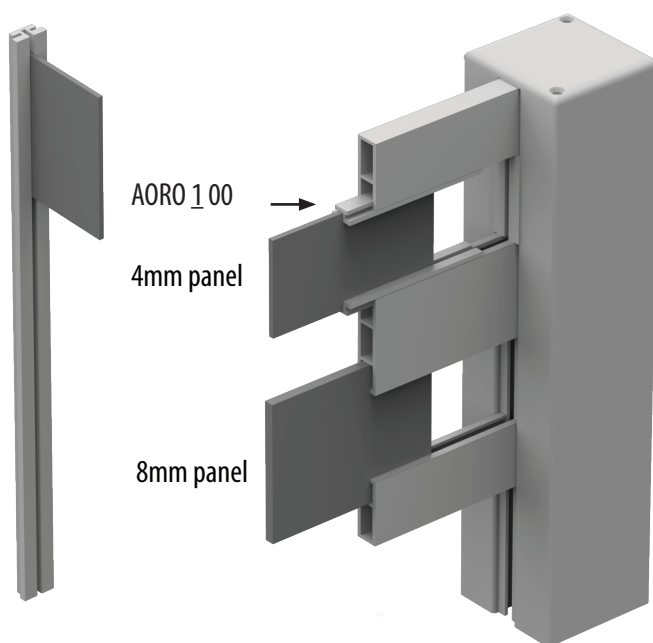


TextPanel	# Panel Clamps
46mm	1 + 1
60mm	1 + 1
100mm	1 + 1
120mm	1 + 1
150mm	2 + 2
200mm	2 + 2
250mm	2 + 2

# INSTALLATION GUIDE / GUIDE D'INSTALLATION

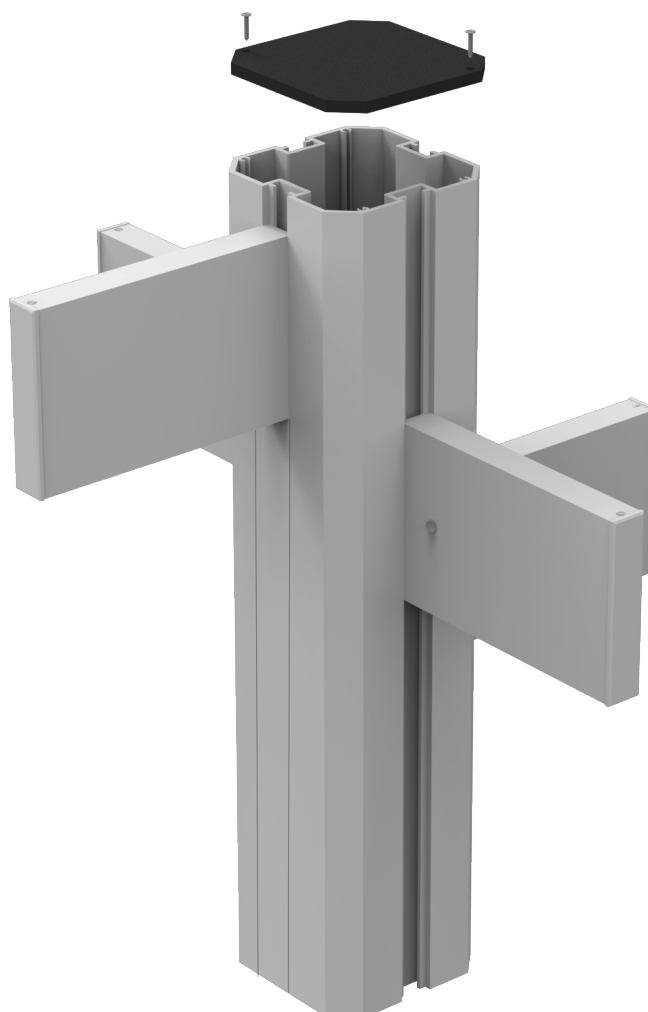
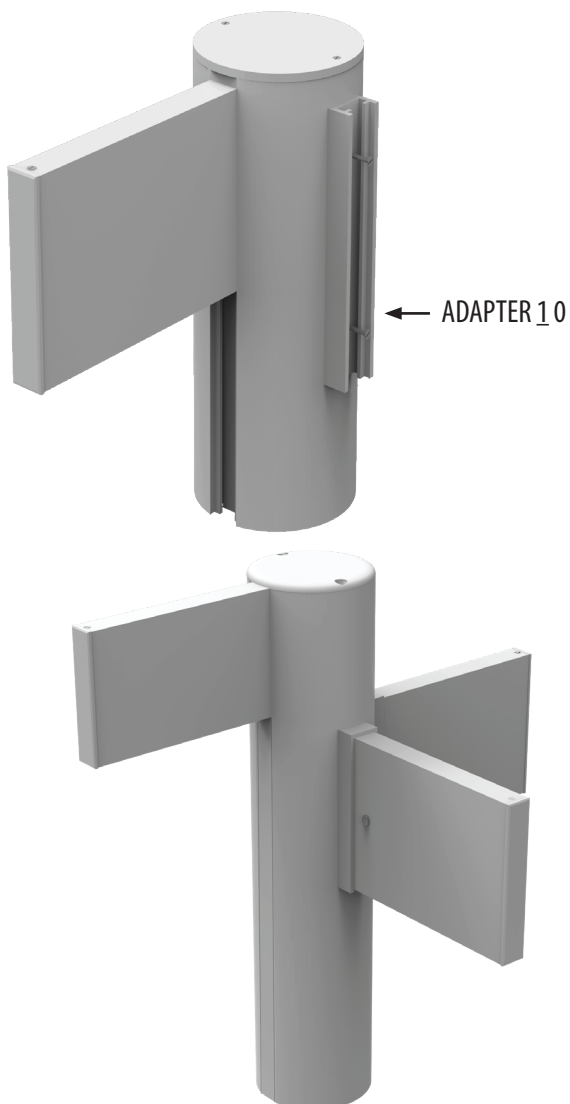
## FINISHING PROFILE / PROFILÉS DE FINITION

## REDUCTION PROFILE / PROFILÉ DE REDUCTION



## ADAPTER PROFILE PROFILÉ DE CONNEXION

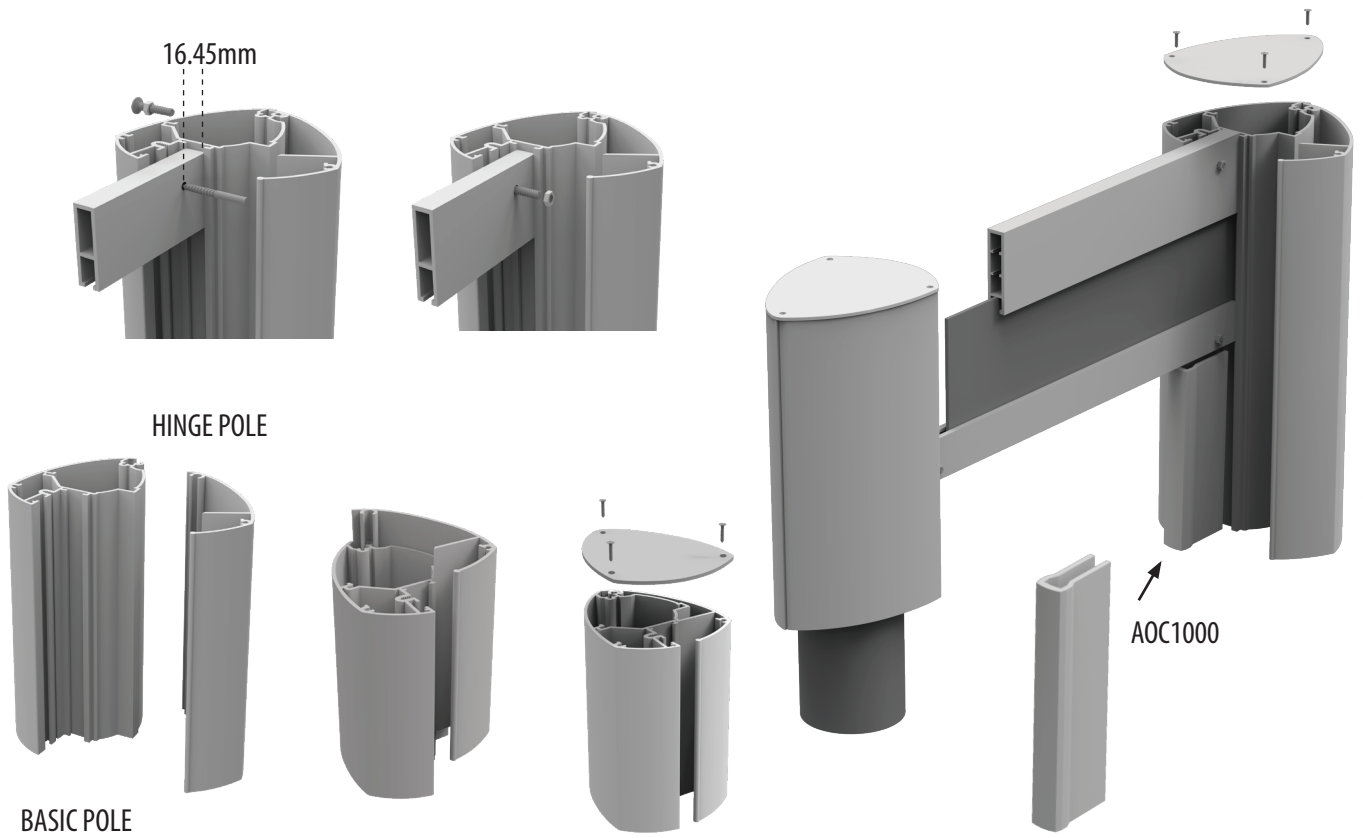
## OCTAGONAL POLE WITH TEXT PANELS POTEAU OCTOGONAL AVEC CAISSONS DOUBLE FACE





# INSTALLATION GUIDE / GUIDE D'INSTALLATION

## ELLIPTICAL POLE ASSEMBLY ASSEMBLAGE DE POTEAUX ELLIPTIQUES



# INSTALLATION GUIDE / GUIDE D'INSTALLATION

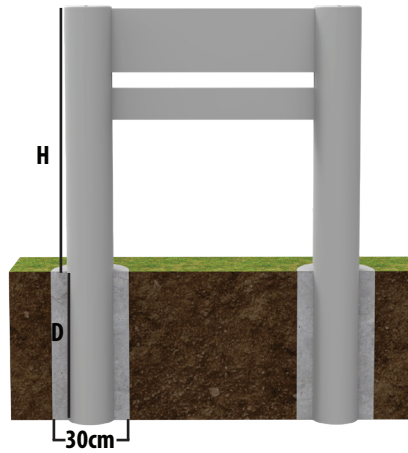
## RULES OF THUMB FOR SIGNS WITH MAXIMUM HEIGHT OF 2500MM OR MAXIMUM PANEL SURFACE OF 2M<sup>2</sup>

Concrete foundation:

1. Minimum diameter = 300mm
2. Depth (D) = 40% of the height of the structure (H) with a minimum of 300mm
3. The concrete should have at least 350 kg of cement per cubic meter

### INSTALLING OPTIONS

#### 1. POLES IN FOUNDATION



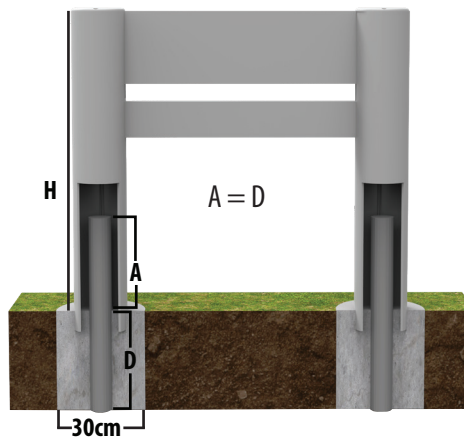
Example 1:  
(H = 2m)

D = 40% x 2000mm  
D = 800mm

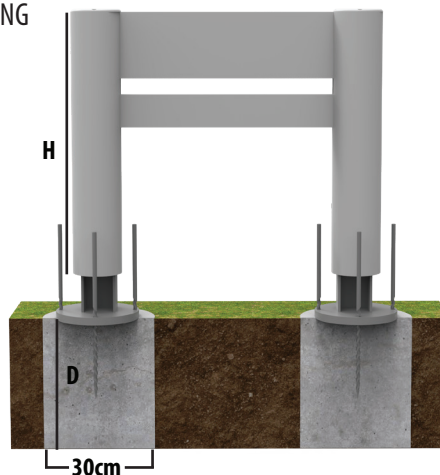
Example 2:  
(H = 50cm)

D = 40% x 500mm  
D = 300mm  
(MINIMUM REQUIREMENT)

#### 2. INTERNAL STEEL STRUCTURE



#### 3. STEEL FEET / CHEMICAL ANCHORING



### DISCLAIMER

The recommendations stated above are purely indicative. Since Cosign has no information regarding the specific location of the Module Plus Outdoor installation, the conditions of the soil and the composition of the concrete foundation, Cosign shall not be liable for any direct, indirect, incidental or consequential damages, arising out of or in any way connected with the use or misuse of our general advice.

For Module Plus Outdoor structures > 2,5m or a panel surface > 2m<sup>2</sup>, please contact an engineering firm for strength/ stability calculations.